

Industrial Ironers

IC44819, IC44821, IC44825, IC44828, IC44832 R/LF



Images shown are a representation of the product only and variations may occur.

Features and benefits

- Easy-to-use electronic control panel, RABC (Risk Analysis and Biocontamination Control – EN 14065) compatible
- DIAMMS (Direct Ironer Advanced Moisture Management System); Automatic speed adjustment with moisture sensors to ensure a perfect result
- Spring loaded pressure roll ensures outstanding ironing quality
- Return feed, can be installed close to a wall for maximum space utilisation (basic and LF models)
- Labour saving automatic Length-Folding device (LF model)
- Rear delivery (R model)
- Fully encased machine for maximum workplace safety and energy saving
- Finger guard protection provides additional safety for operators
- Durable ironing belts made of Nomex[®] which can withstand temperatures above 220°C
- Nickel-plated cylinder prevents rust and improves lifetime
- **Maintenance free ceramic gas burner** minimizes downtimes. 20% more efficient than regular blue flame burners. A unique and patented burner by Electrolux

Main options

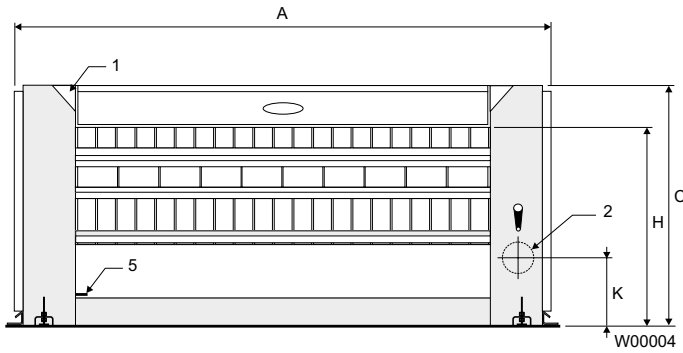
- Multi-layer cylinder Dubixium™ for increased production on electric and gas heated machines
- CMIS (Certus Management Information System) connection for traceability according to European Standard EN14065

Main specifications			IC44819	IC44821	IC44825	IC44828	IC44832
Capacity*,	max. water evaporation**	l/h	38/57/35	40/63/37	48/75/46	51/81/51	59/93/59
Cylinder, diameter (el,gas/steam)		mm	479/457	479/457	479/457	479/457	479/457
	length	mm	1910	2120	2540	2750	3170
Ironing speed		m/min	1.5-9	1.5-9	1.5-9	1.5-9	1.5-9
Heating, electricity		kW	33	37	44	47	54
	steam (900 kPa)	kg/h	83	92	110	123	141
	gas	Btu/h (kW)	133100(39)	150100(44)	177400(52)	191100(56)	221800(65)
* 50% residual moisture content cotton 180g/m ² and 100% cylinder use (ISO 9398-1).							
** El/steam/gas.							

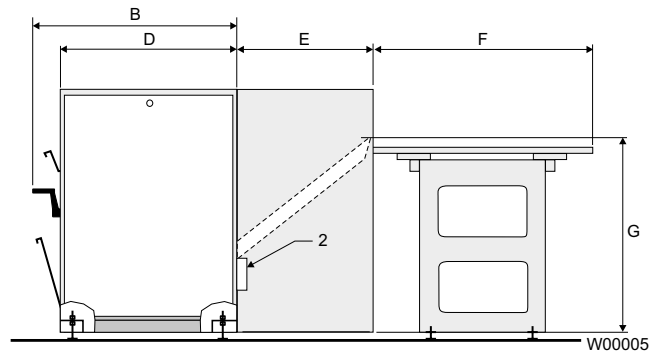
Electrical connections*			IC44819	IC44821	IC44825	IC44828	IC44832
Heating Voltage							
EI	400-415V 3AC 50/60 Hz	kW(A)	35 (63)	38 (63)	45 (80)	49 (80)	56 (100)
Gas, steam							
	400-415V 3AC 50/60 Hz	kW(A)	2 (16)	2 (16)	2 (16)	2 (16)	2 (16)
Steam, gas and air connections							
Steam		DN	20	20	20	20	20
Rec. steam pressure		kPa	900	900	900	900	900
Condensate		DN	10	10	10	10	10
Gas		DN	20	20	20	20	20
Gas pressure,							
natural gas (G20/G25)		Pa	2000/2500	2000/2500	2000/2500	2000/2500	2000/2500
propane (G31)		Pa	3700/5000	3700/5000	3700/5000	3700/5000	3700/5000
Air outlet		ø mm	160	160	160	160	160
Evacuated air,							
gas		m ³ /h	800	830	950	980	1010
el, steam		m ³ /h	740	740	880	920	960
Pressure drop		max. Pa	200	200	200	200	200
Sound levels							
Airborne sound level							
		dB(A)	65	65	65	65	65
Heat emission							
% of installed power, max.			3	3	3	3	3
Shipping data, (LF models)**							
		net, kg	700/840	750/890	860/980	940/1060	1040/1150
Shipping volume, basic & LF/R models							
		m ³	4.5/6.8	4.8/6.7	5.4/7.6	5.6/8.0	6.2/8.9
Dimensions in mm							
A	Width		2575	2785	3205	3415	3835
B	Depth		1070	1070	1070	1070	1070
C	Height		1270	1270	1270	1270	1270
D			950	950	950	950	950
E	R model only		670	670	670	670	670
F	R model only		800	800	800	800	800
G	R model only		840	840	840	840	840
H			1050	1050	1050	1050	1050
I	Ironing width		1910	2120	2540	2750	3170
K			355	355	355	355	355
L			190	190	190	190	190
1 Control panel 2 Exhaust connection 3 Steam connection 4 Condensate connection 5 Electrical connection 6 Gas connection							

* Other voltages available, see installation manual.

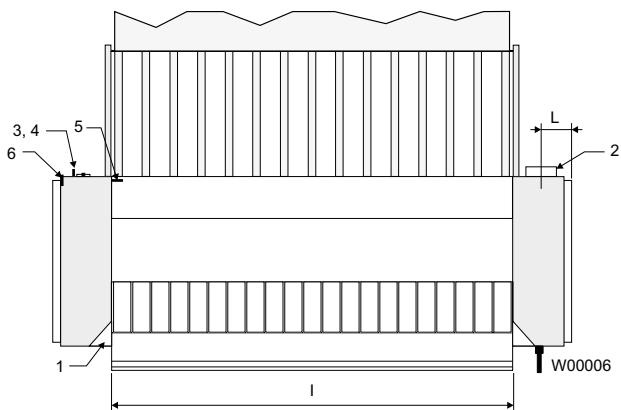
** Average data. Crated weight/shipping volume depends on configuration. Please contact logistics for exact measures.



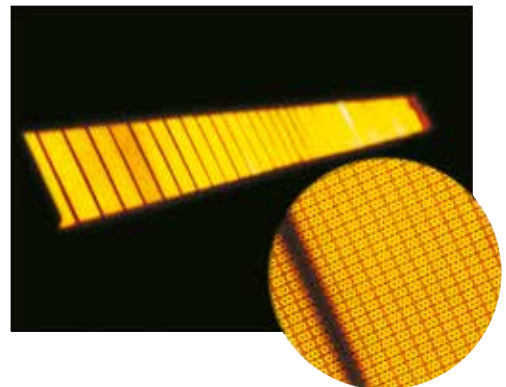
Front view



Right view



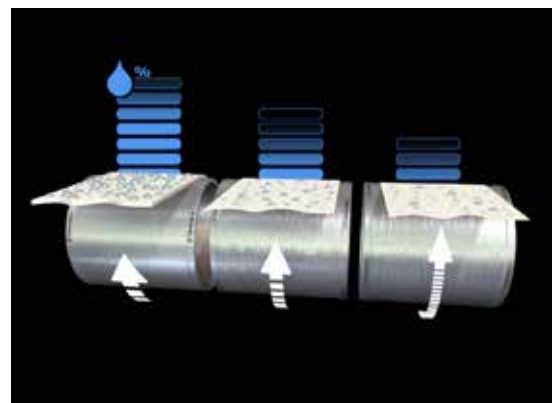
Top view



Maintenance free ceramic gas burner minimizes downtimes. 20% more efficient than regular blue flame burners. A unique and patented burner by Electrolux



Multi-layer thermal oil Dubixium™ cylinder guarantees smooth operation at all times thanks to zero overheating of sides.



Automatic ironing speed adjustment systems DIAMMS™ is based on real moisture of the items. Unique and patented.

Production in items per hour Electric/Gas	Textile quality	RM*	IC44819	IC44825	IC44832
50/50 polyester-cotton sheet, 3000 x 1800 mm	140 gr/m ²	35%	110	110	160
50/50 polyester-cotton sheet, 2900 x 2400 mm	140 gr/m ²	35%	-	115	135
100% cotton sheet, 3000 x 2800 mm	160 gr/m ²	50%	-	-	80
100% cotton table cloth, 2000 x 1500 mm	260 gr/m ²	55%	62	80	80

Production in items per hour Steam (9 bar)	Textile quality	RM*	IC44819	IC44825	IC44832
50/50 polyester-cotton sheet, 3000 x 1800 mm	140 gr/m ²	35%	110	110	200
50/50 polyester-cotton sheet, 2900 x 2400 mm	140 gr/m ²	35%	-	115	155
100% cotton sheet, 3000 x 2800 mm	160 gr/m ²	50%	-	-	95
100% cotton table cloth, 2000 x 1500 mm	260 gr/m ²	55%	75	95	95

* RM: Residual Moisture before ironing

Above production figures correspond to the machine capacity.

They can vary with the efficiency of the operator and are achieved with 300 mm between items at feeding.